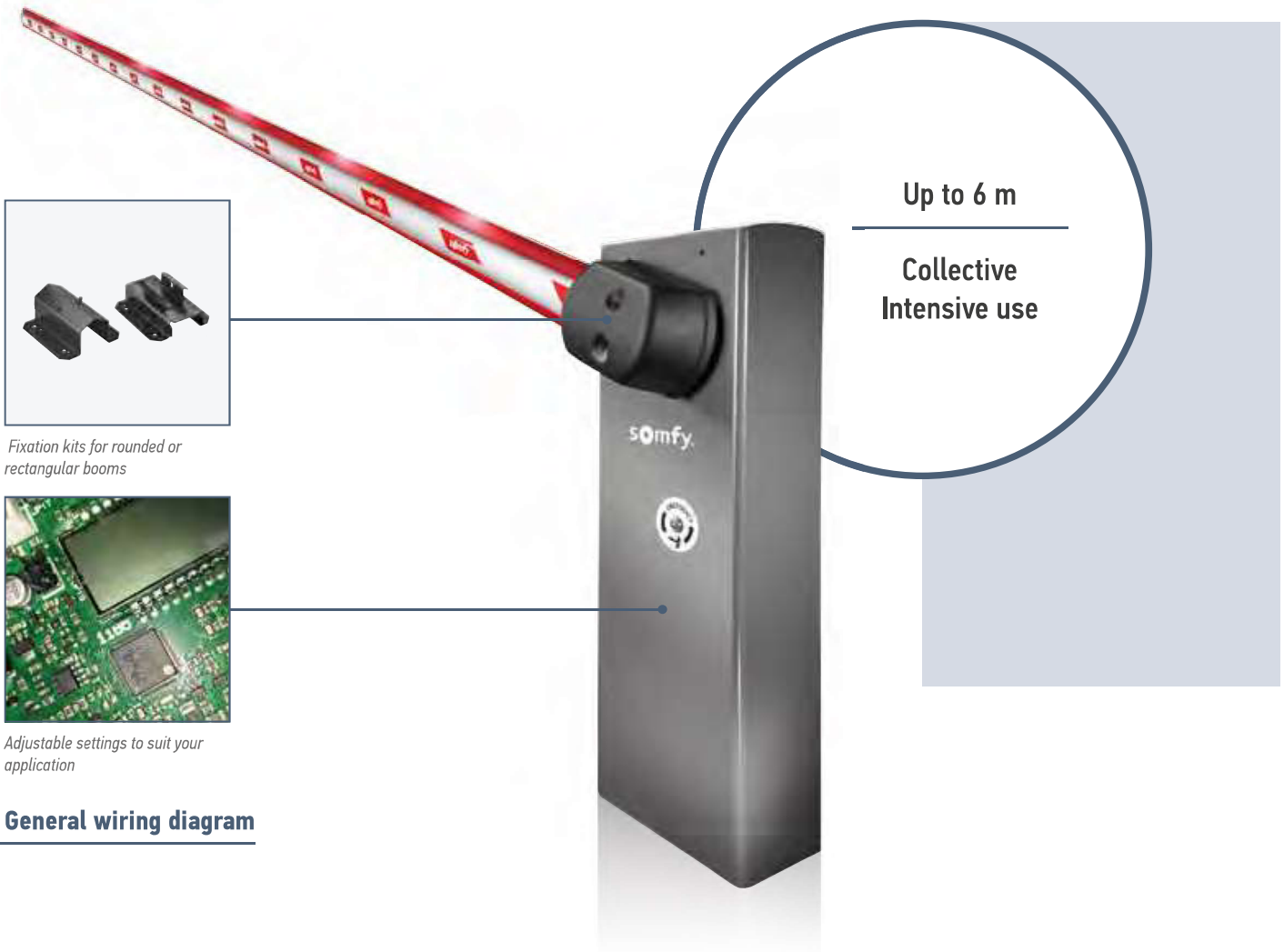


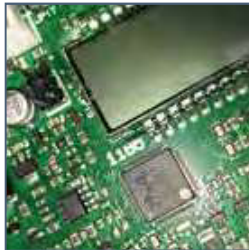
# LEVIXO 40/60 24V RTS



## BARRIERS

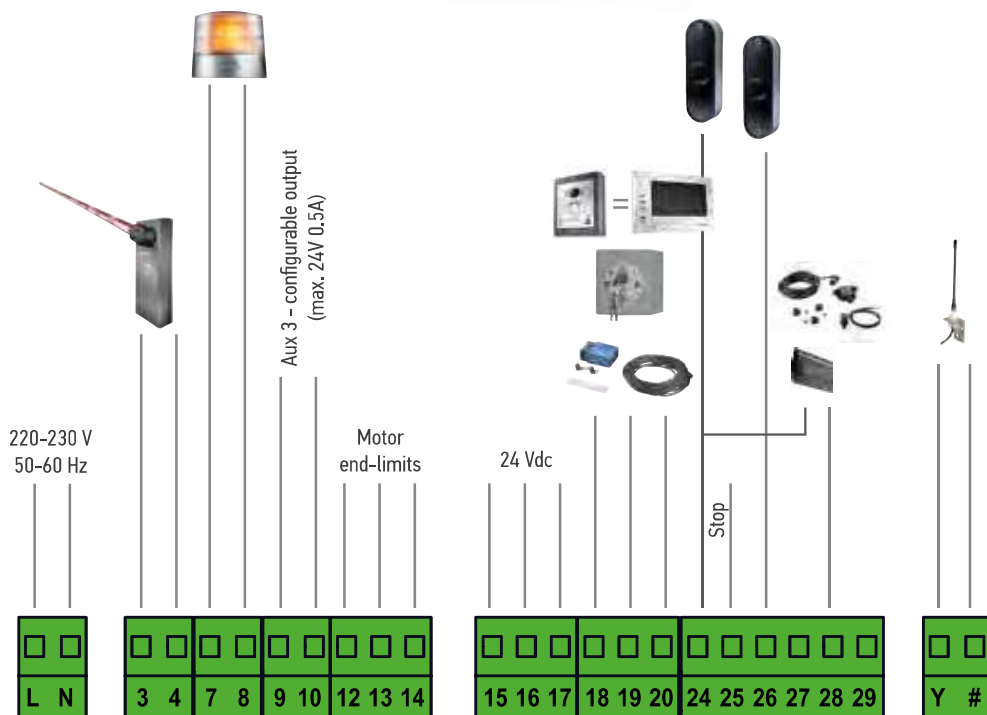


Fixation kits for rounded or rectangular booms



Adjustable settings to suit your application

### General wiring diagram



## Fast, intensive and reliable, made for collective

### Intensive & collective use

- Intensive use with 2 000 operations per day thanks to the 24V motor
- Automatic closing with adjustable delay
- Led settings for warnings
- Fast closing setting with immediate closing after photocells detection
- Courtesy light
- Differentiated open and close wired input compatible for schedule operation

### Fast in motion

- Fast opening and closing from 2.5s to 9s
- Full control of barrier speed thanks to adjustable acceleration, travel speed and deceleration
- 346 cycles/hour in intensive use

### User safety

- Built-in obstacle detection thanks to encoder technology
- Adjustable brake at end closing
- Full control of barrier forces with adjustable opening and closing torques
- Orange light with 2s warning

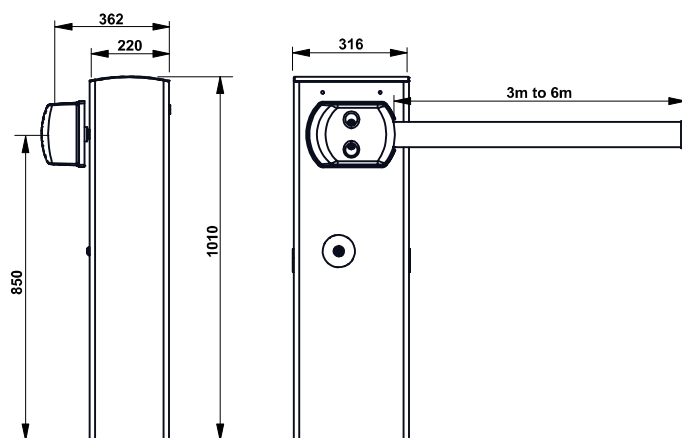
### Product security

- Mechanical and electrical end limits for secured and accurate operation
- Various independent fuses to protect the control board

### Two models

- Levixo 40 24V RTS: up to 4 meters
- Levixo 60 24V RTS: up to 6 meters

### General overall size



### Technical characteristics

Mains power supply	230 V
Motor voltage	24V
Maximum power consumption	300 W
Accessories power supply	24 V / 0.5 A
Maximum number of operations/day (Openings/Closings)	2 000
Maximum number of cycles per hour	346
Motor torque	Levixo 40 130 Nm Levixo 60 260 Nm

Opening time	Levixo 40	2.5 s to 6 s
	Levixo 60	3 s to 9 s
RTS radio frequency	433.42 MHz	
Number of remote controls	128 channels maximum	
Index of protection	IP 54	
Operating temperature	-20°C to +55°C	
Maximum boom length*	Levixo 40	4 m
	Levixo 60	6 m

\*given for boom without extra accessories